

#1  
BEST VALUE  
ALL WOOD CABINETS IN U.S.A.

# SOLID WOOD CABINETS

For the Price of Compressed Wood Cabinets

Hamca "H2"

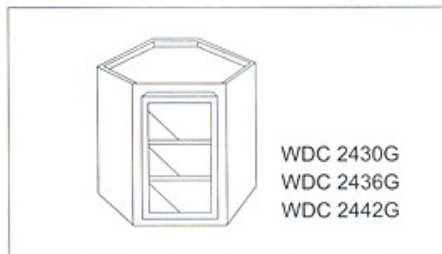
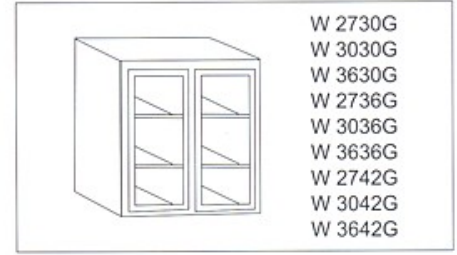
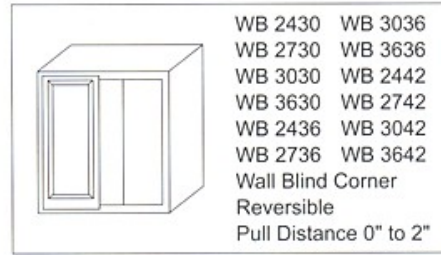
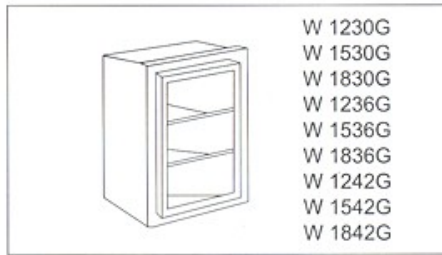
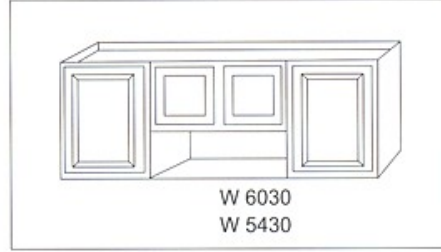
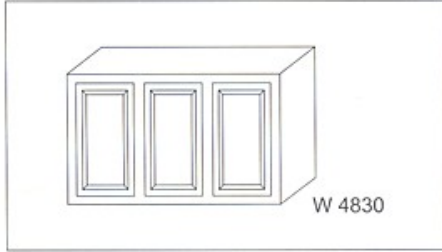
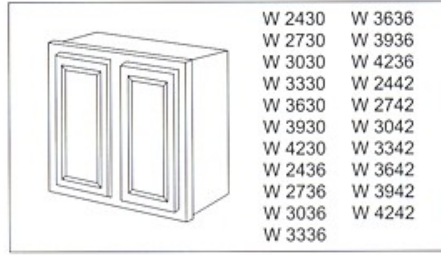
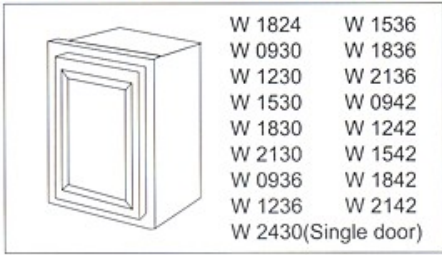


## Features

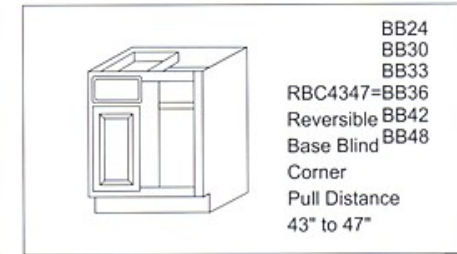
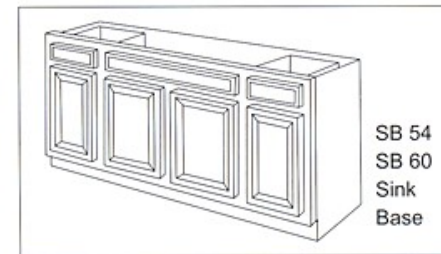
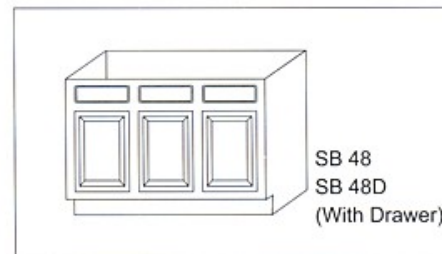
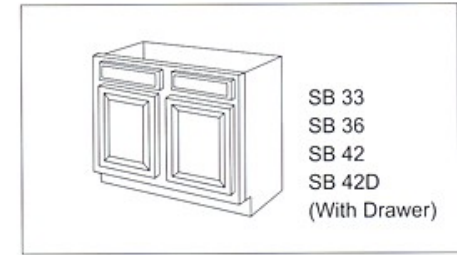
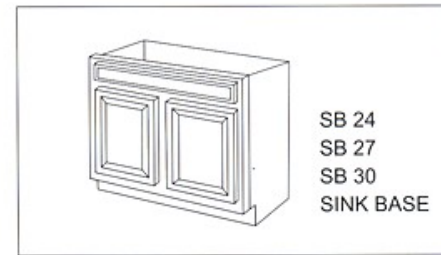
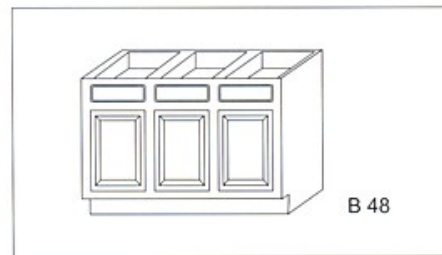
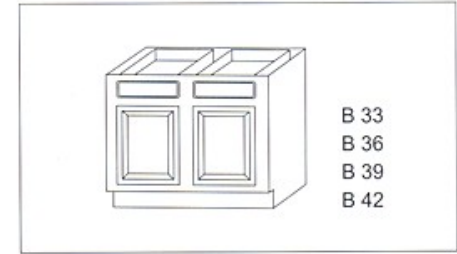
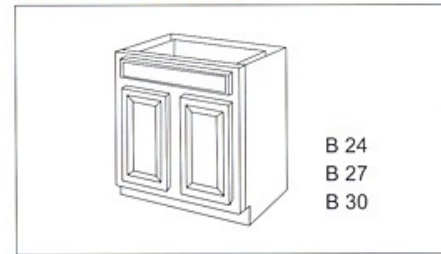
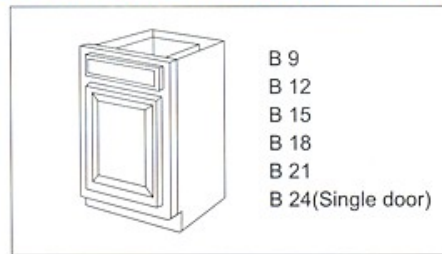
- 3 / 4" solid wood door frames.
- 1 / 2" plywood sides.
- Epoxy-coated drawer glides.
- Easy to install ,with installation guide.
- Adjustable self-closing concealed hinges, and adjustable shelves.
- Square raised panel doors for wall cabinets.
- No particle board anywhere.
- Constructed with all natural wood products.
- Wood toe kicks.
- Also offer factory pre-assembled cabinets.

**HAMCA KITCHEN Brooklyn. NY 11219**

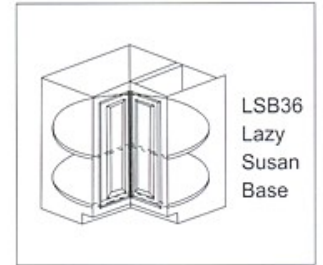
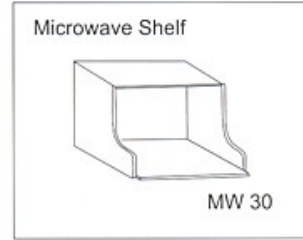
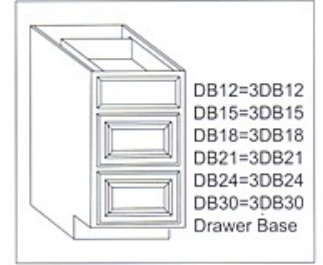
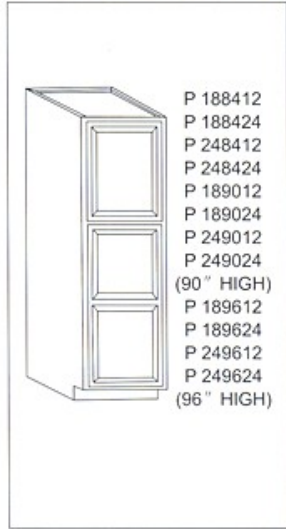
## WALL CABINETS 12"DEEP



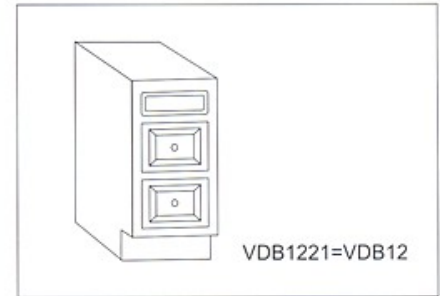
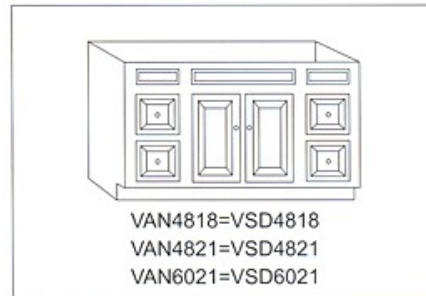
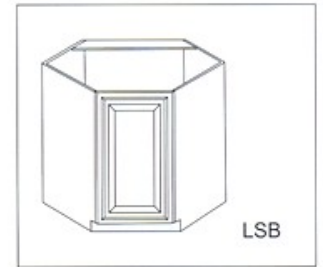
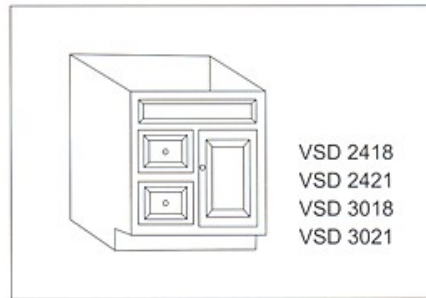
## BASE CABINETS 34 - 1/2"HIGH & 24"DEEP



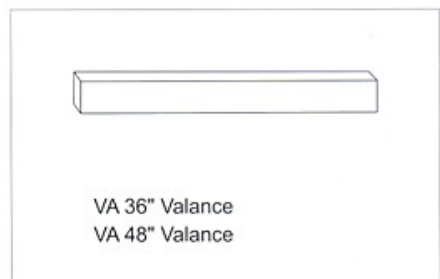
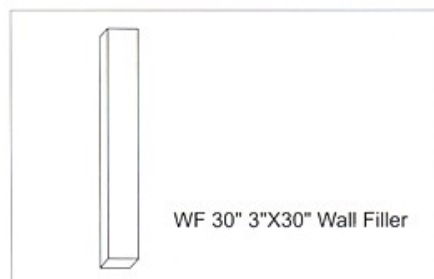
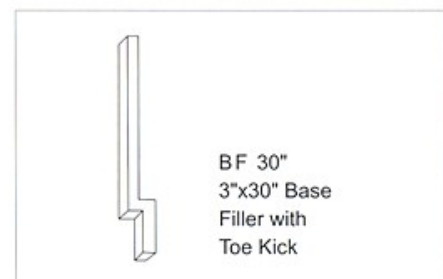
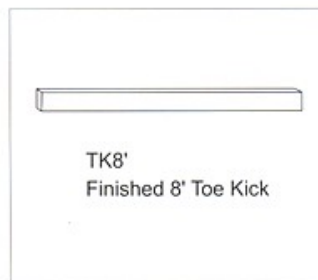
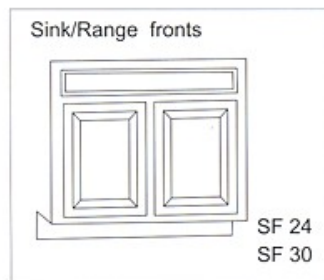
## TALL CABINETS (84" HIGH)



## VANITY CABINETS



## SPECIALTY UNITS



# All Wood Vanities

