

HUD Approved Cabinets (General Use)

5% Upgrade for KCMA approved Blum Hardware

Continental Cabinets



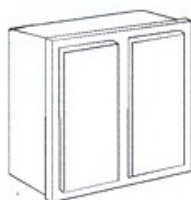
Features:

- ALL WOOD CONSTRUCTION • 1/2" PLYWOOD SIDES
- 3/4" SOLID POPLAR FACE FRAMES • ADJUSTABLE SELF-CLOSING EXPOSED HINGE
- 5/8" ADJUSTABLE PLYWOOD SHELVES • DRAWER BOX w/1/2" PLYWOOD SIDES
- EPOXY COATED DRAWER GLIDES • 3/4" PLYWOOD DOORS
- 4-1/2" TOE SPACE WITH ALL WOOD TOE KICKS

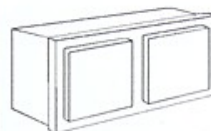
WALL CABINETS 12" DEEP



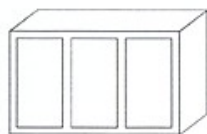
W 930
W 1230
W 1530
W 1830
W 2130



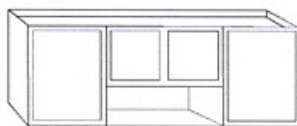
W 2430
W 2730
W 3030
W 3330
W 3630
W 4230



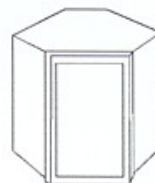
W 3012 W 3018
W 2415 W 3618
W 3015 W 2424
W 3315 W 3024
W 3615 W 3624



W 4830



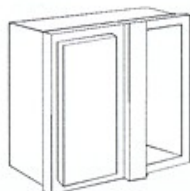
W 5430
W 6030



WDC 24" × 30"
Wall Diagonal
Corner



W 1230G
W 1530G



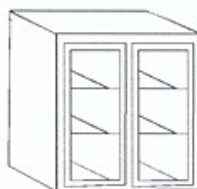
WB 2730
WB 3030
WB 3630
Wall Blind
Corner
Reversible
Pull Distance
0" to 2"



W 3630G



WDC 2430G

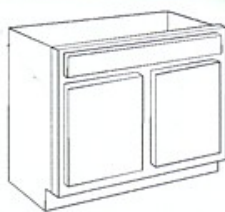


W 2730G
W 3030G

BASE CABINETS 34 - 1/2" HIGH & 24" DEEP



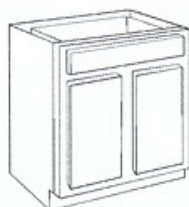
B 9
B 12
B 15
B 18
B 21



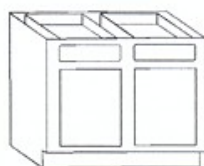
SB 24
SB 27
SB 30



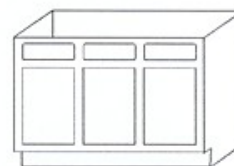
SB 36
SB 42



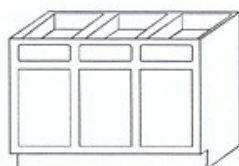
B 24
B 27
B 30



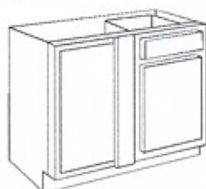
B 33
B 36
B 42



SB 48



B 48

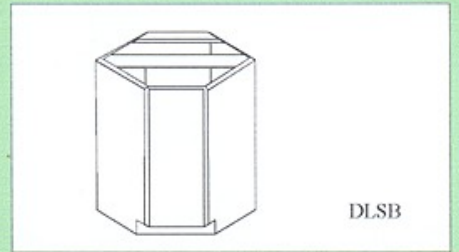
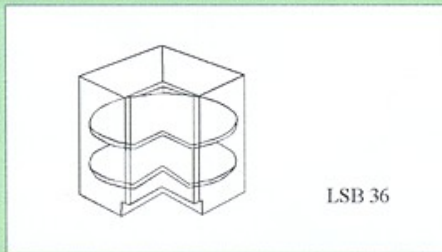
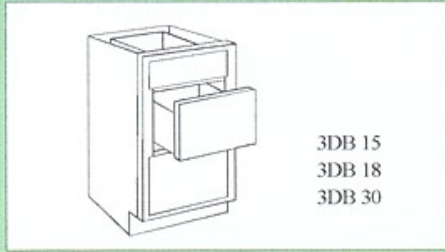


BB 24=BB 3639
BB 30=BB 3942
BB 36=BB 4245
BB 42=BB 4548

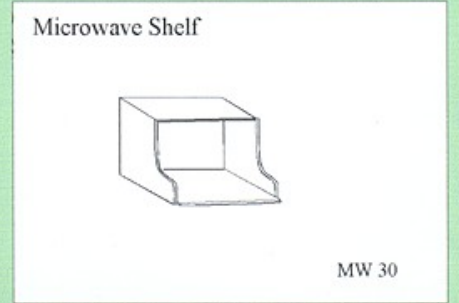
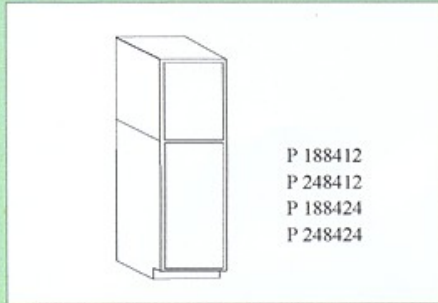


SB 54
SB 60

BASE CABINETS 34 - 1/2" HIGH & 24" DEEP



TALL CABINETS (84" HIGH)



SPECIALTY UNITS

